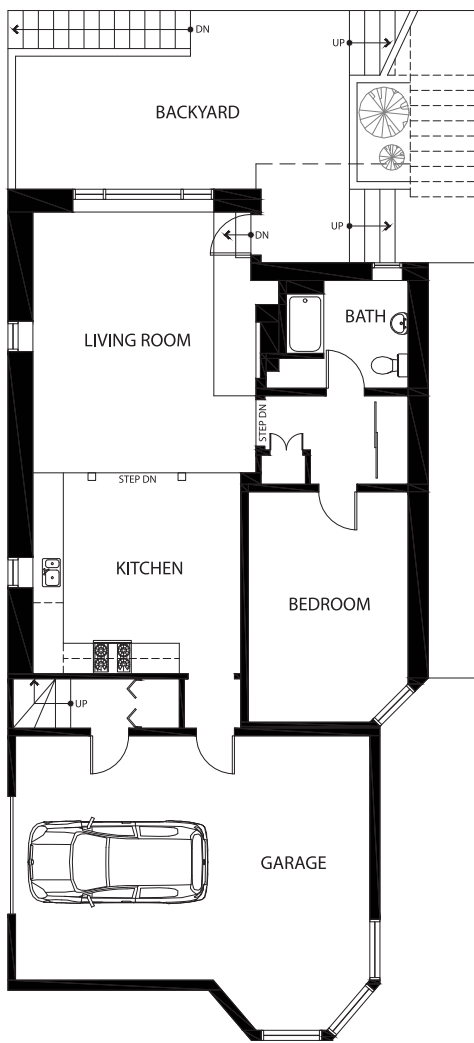


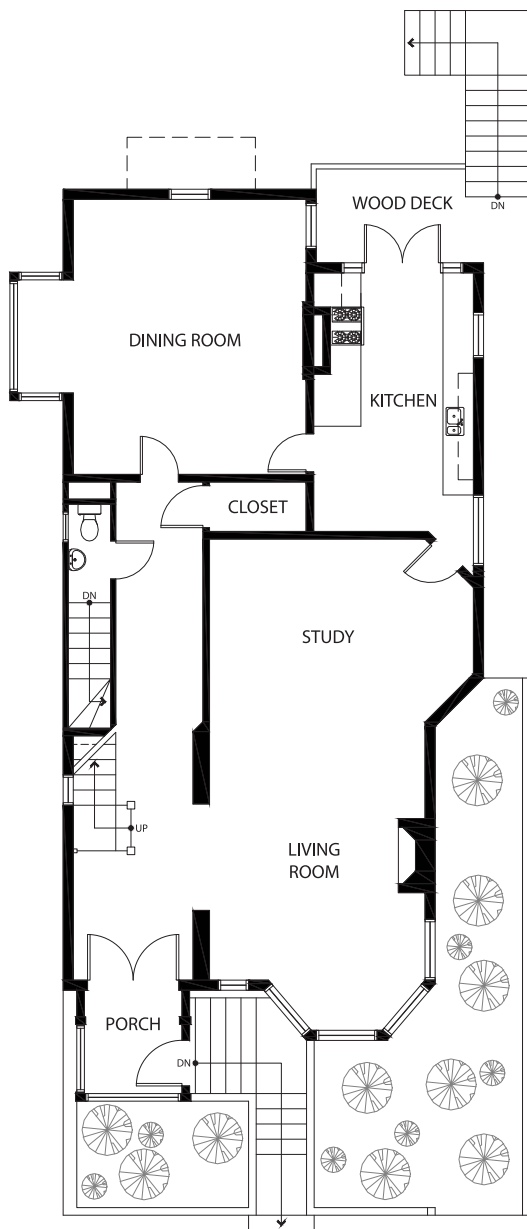


722 STEINER STREET

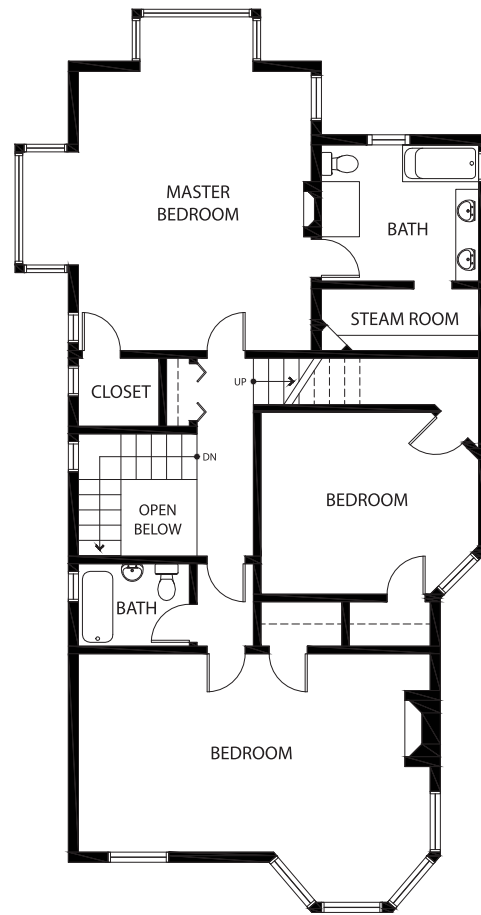
Historic Alamo Square Victorian



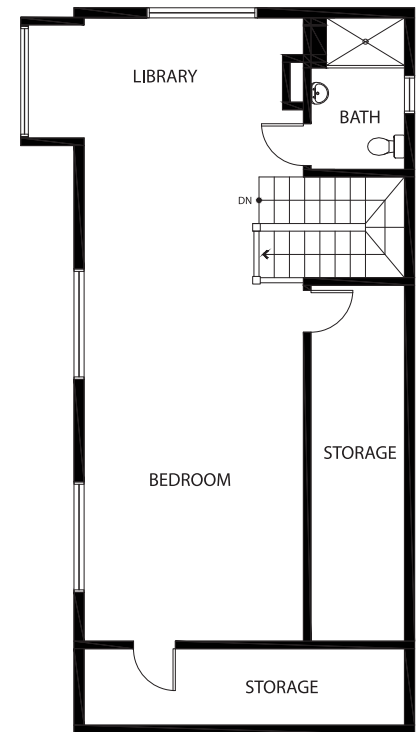
LOWER LEVEL



MAIN LEVEL



UPPER LEVEL



ATTIC LEVEL

lynnea key realty
 415.673.6917 main
 415.730.6727 cell
 415.824.2469 fax
 lynnea@lynneakey.com
www.lynneakey.com



5 bedrooms • 4 1/2 baths • 4,692 Square Feet, Per Appraisal
 Exquisite Victorian Details • Abundant skylights
 Stunning Views of downtown San Francisco and Alamo Square
 Legal one bedroom apartment with one bath and separate entrance • 1 car parking

Lynnea Key, a professional Real Estate Broker since 1981, is a solo, personal boutique broker providing a full range of real estate services.



HISTORIC ALAMO SQUARE VICTORIAN

This exceptional Queen Anne Tower Victorian presents a rare opportunity to own one of San Francisco's finest period homes. Built in 1892 by Matthew Kavanaugh, the builder of Alamo Square's famous "postcard row," this grand residence offers approx. 4,700 sq. ft. of light-filled space with stunning views of downtown San Francisco and the beautiful greenery of Alamo Square.

The main floors of the home feature numerous examples of exquisite Victorian details, from the gorgeous hardwood staircase that greets you in the front entry hall to the stunning plaster frieze of the formal dining room. Everywhere you look there are delightful expressions of Victorian exuberance. Grand pocket doors, Lincrusta wainscoting, plaster brackets and rosettes, substantial wood moldings and leaded glass windows create an atmosphere of grace and beauty.

The front entry hall leads to a very large double parlor with a marble mantel, a spacious formal dining room with a Brazilian cherry floor, and an enormous kitchen with an outdoor dining terrace. Under the staircase is a powder room and access to the lower level which has a legal one bedroom apartment with a separate entrance and one bathroom. This level also features a small but delightful sunny garden and a single car garage with laundry and storage areas.

The second level of the home has three bedrooms and two baths. The large front bedroom has a decorative original fireplace and a sitting area in the octagonal tower with splendid views of Alamo Square. The huge master bedroom suite with full bath at the rear of the second level has wonderful views of downtown. A third bedroom and a separate full bath complete the level. A staircase leads to the finished attic space which contains one enormous room with a high vaulted ceiling and one bath. Abundant skylights provide plenty of sunshine and expansive views of the city.

This magnificent Victorian residence provides the chance to create a truly refined and gracious space for living and entertaining in grand style



722 STEINER STREET

Offered at \$3,500,000

lynnea key realty

415.673.6917 main
415.730.6727 cell
415.824.2469 fax
lynnea@lynneakey.com
www.lynneakey.com



The information contained herein has either been given to us by the owner of the property or obtained from sources that we consider reliable. We have no reason to doubt its accuracy, but we do not guarantee it.

